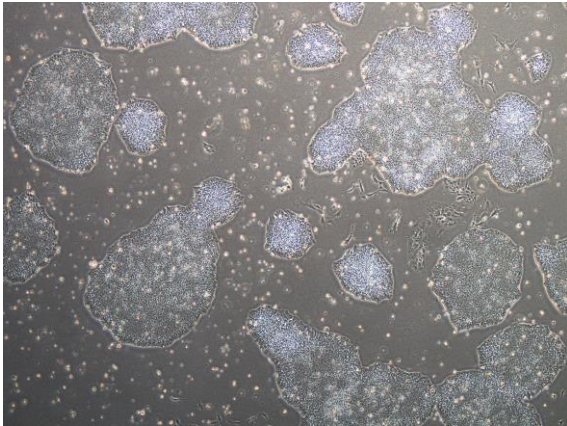
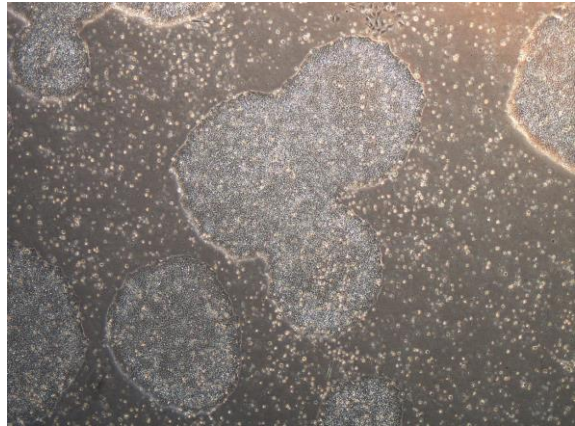


## 【 CiRA-j-1047 】 Morphology of iPSC colonies

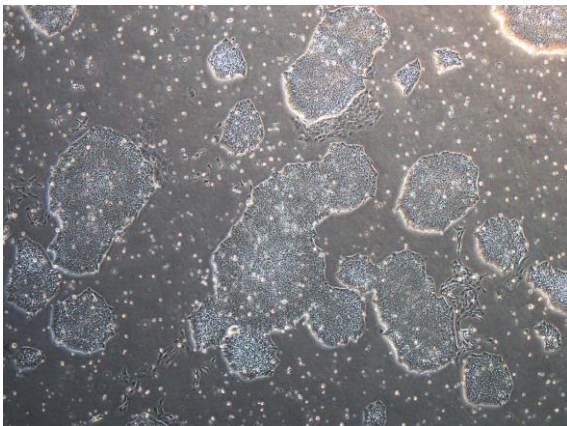
CiRA-j-1047-A: passage-2



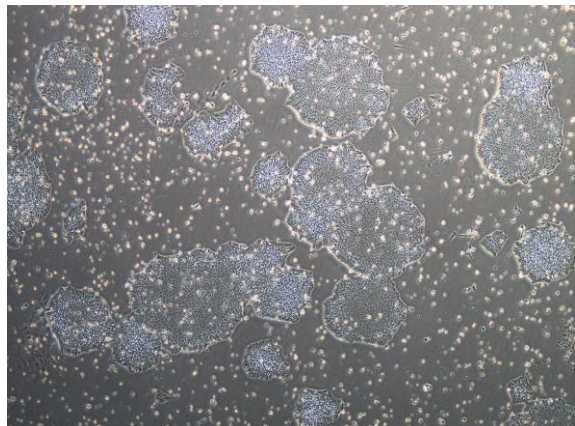
CiRA-j-1047-B: passage-3



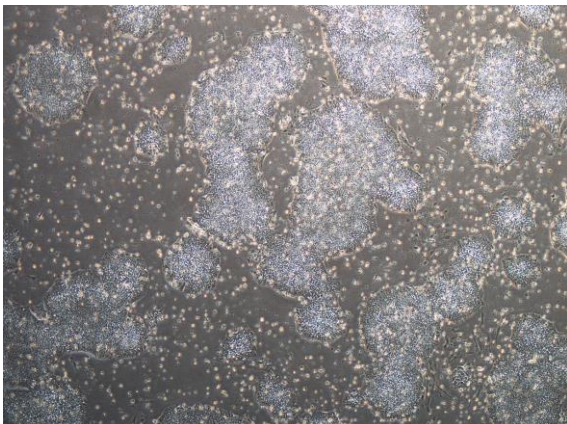
CiRA-j-1047-C: passage-2



CiRA-j-1047-D: passage-2



CiRA-j-1047-E: passage-2



CiRA-j-1047-F: passage-2



( All images were captured at 4x magnification )